



迷你手提蒸氣掛燙機

為了使您能更瞭解本產品的性能和使用時的安全，請使用前務必詳細閱讀以下說明。

一、型號及規格

型號 : GS6707
電壓 : 220-240V 50/60Hz
功率 : 900W
水箱容量 : 110毫升
量杯容量 : 150毫升
運作時間 : 約9分鐘連續輸出蒸氣
配件 : 可拆卸式毛刷及量杯



圖片只供參考，一切以實物為準

二、注意事項

- 1) 使用本產品前，請詳細閱讀本說明書。
- 2) 產品只供室內使用。
- 3) 產品不是玩具，應避免孩童單獨使用本產品。
- 4) 產品並不適合用於商業用途。
- 5) 水箱只可注入清水，注入其他液體(如清潔劑、香薰精油或化學物品)，可能會破壞此機。強烈建議使用蒸餾水或不含礦物質的水，可延長本機壽命。
- 6) 清洗掛燙機時用清水清洗水箱並用乾淨的抹布擦乾。
- 7) 請勿使用清潔劑或研磨劑清潔機體內部。
- 8) 清潔前請先關閉電源並拔掉電源插頭。
- 9) 此機噴出的蒸氣熱力會引致灼傷，請勿把蒸氣輸出口指向他人或動物。
- 10) 為確保本機操作正常，請於每次用後排走水箱餘水。
- 11) 切勿使用腐蝕性溶劑清潔產品。
- 12) 在本機缺水、注水、排水或不在使用時，請先拔掉插頭。
- 13) 蒸氣輸出口及配件會於使用時受熱，切勿在使用途中接觸蒸氣輸出口或更換配件，以免受傷。
- 14) 為避免被蒸氣輸出口溢出的熱水燙傷，使用時應把本機遠離身體，以及檢查蒸氣輸出口有否凝結及滲漏。
- 15) 當水箱缺水時，泵水器仍然繼續運作，這是正常現象。請立即關機，待機身完全冷卻後，才可注水重新使用。
- 16) 不要將掛燙機貼近牆壁、電器及家具表面使用，多餘的水分可能會對這些物品造成傷害。
- 17) 不可擅自拆卸、修理、改造本產品，如有任何問題請先致電客戶服務中心。
- 18) 不要在本機運行時加水。
- 19) 本機不是為體質、感覺或智力有障礙人士(包括小孩)或缺乏經驗及知識者使用，除非他們曾經接受負責安全人士的監督或指示。大人應指導小孩不可把玩電器。

三、使用方法



毛刷安裝

- 1) 安裝前請確保本機電源已關閉及再沒有蒸氣噴出。
 - 2) 把毛刷套在蒸氣輸出口的上方及下方。
 - 3) 啟動本機前請確保毛刷配件與蒸氣輸出口正確接上，不會堵塞蒸氣出口。
- 注意: 當蒸氣輸出時，不要在蒸氣輸出口上安裝毛刷。

垂直蒸燙衣物

- 1) 把需要蒸燙的衣服垂直地掛在衣架上。
 - 2) 把蒸氣輸出口指向衣服並由上而下蒸燙。
 - 3) 重覆由上而下蒸燙直至去除衣服皺紋。
- 注意: 蒸燙時輕輕拉扯衣服底部令衣服較挺，可更有效地去除皺褶部份。



橫向蒸燙衣物

- 1) 把需要蒸燙的衫褲放在耐熱的平面上。
 - 2) 把蒸氣輸出口指向衣服並由前到後蒸燙。
 - 3) 重覆由前到後蒸燙直至去除衣服皺紋。
- 注意: 蒸燙時輕輕按實衣服並反蒸燙方向拉扯衣服，可更有效地去除皺褶部份。



四、清潔保養

- 1) 清潔前應確保本機已拔掉電源插頭及處於冷卻狀態。
- 2) 清潔時，應用濕軟的布團擦拭掛燙機的表面。
- 3) 請不要將掛燙機浸入到液體中進行清潔。
- 4) 打開水箱膠塞倒出餘下的水。
- 5) 清潔後放置在乾爽陰涼的地方。

五、保用

本機可獲自購買日起1年免費保用(商業用途享有三個月免費保用)。此保用只包含生產所導致的品質問題；並不包括毛刷、量杯及其他附件，因誤用或不依說明書指示使用而導致的損壞。

***額外3個月保用：凡於購買產品後10天內完成網上登記，即可免費延長保用期3個月，即15個月免費保用(商業用途除外)。請即登入網站：www.origo.hk

注意：保用時，須帶同收據及請先致電服務中心。

服務中心

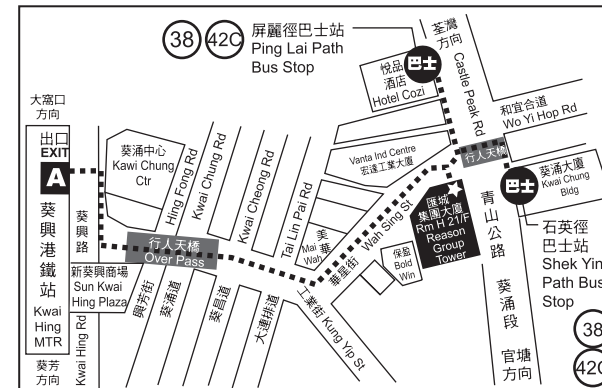
源澤市務有限公司
香港新界葵涌青山公路403號
匯城集團大廈21樓H室(近華星街12號)
電話：2156 8238

辦公時間

上午10:30 - 下午12:30 (星期一至五)
下午02:30 - 下午05:30 (星期一至五)
上午10:30 - 下午12:30 (星期六)
(星期日及公眾假期休息)



源澤地圖



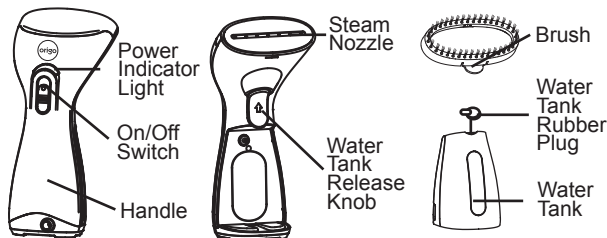


Handy Garment Steamer

Thank you for your purchase of our product. To use this product properly and safely, please read the following instruction carefully.

1. MODEL & SPECIFICATION

Model	: GS6707
Power supply	: 220-240V 50/60Hz
Power	: 900W
Water Tank Capacity	: 110ml
Measuring Cup Capacity	: 150ml
Run Time	: Continuous steam emits about 9 min
Accessory	: Brush and Measuring Cup



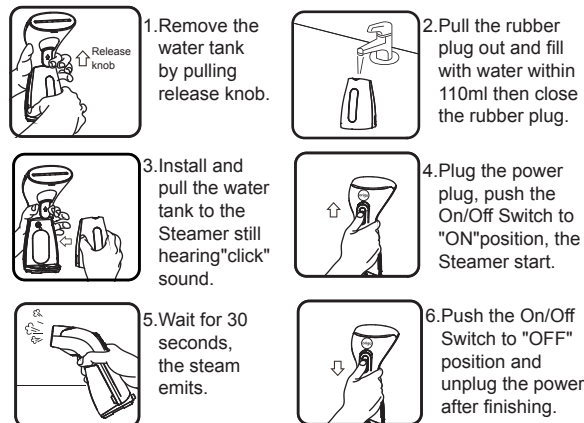
The picture is for reference only, everything in kind shall prevail.

2. ATTENTIONS

- 1) Read all instructions and warnings carefully before use.
- 2) This product is for indoor use only.
- 3) This product is not a toy. Do not allow children to play it.
- 4) This product is designed for household use only.
- 5) Only water should be use - other cleaning agents(detergent, aromatherapy oil or chemicals) could damage the unit. Distilled or demineralized water is highly recommended, in order to extend the life length.
- 6) Clean the unit by rinsing the water tank and wiping it dry with a clean cloth.
- 7) Do not use detergents or abrasive agents to clean the steamer unit.
- 8) Shut off and unplug the power before cleaning.
- 9) Steam emitted by this unit is very HOT. To avoid burns and injuries, never point the steam nozzle at other person or pet.
- 10) To ensure the stable operation of the steamer, please drain the water tank after using it.
- 11) Never use corrosive solvent to clean product.
- 12) Always disconnect the unit from electrical outlet when filling or disposing water as well as the water tank is empty or the unit not being used.
- 13) Steam nozzle and accessory become HOT when you using. To avoid being injuries, do not touch nozzle while using this unit. Do not attempt to remove accessory while unit is emitting steam.
- 14) To avoid being scalded by the HOT water emitting from steam nozzle, keep the unit away from body when using it.
- 15) When the water tank is lack of water, the pump continues to operate, which is normal. Please turn off the unit immediately, and wait for the unit to cool down completely before refill water and reuse it.

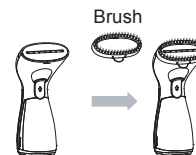
- 16) Do not point the unit at walls, home appliance, furniture surface as excess moisture could cause damage to them.
- 17) Do not repair, modify or disassemble this unit. Call customer service for assistance and guarantee information.
- 18) Do not fill water tank when the steamer is being used.
- 19) Reminder: This appliance is not intended for use by persons (including children) with reduced physical, sensory or mental capabilities, or lack of experience and knowledge, unless they have been given supervision or instruction concerning use of the appliance by a person responsible for their safety. Children should be supervised to ensure that they do not play with the appliance.

3. DIRECTIONS FOR USE



BRUSH INSTALLATION

- 1) Make sure the unit is turned off and no steam emitted from the steam nozzle.
 - 2) Line up the Brush into upper and lower slots of the steam nozzle plate.
 - 3) Check whether the Brush is properly installed before start the steaming.
- Caution: Do not install the Brush on the Nozzle Plate while steam emitting.



VERTICAL STEAMING

- 1) Hang the clothes on a hanger properly.
 - 2) Direct the steam nozzle towards the garment from the top to bottom part.
 - 3) Repeat the vertical steaming motion until smoothing out the wrinkles.
- Note: Pull the bottom of the clothes slightly tight with your free hand to make the steaming effectively.



STEAMING IRONING

- 1) Place the clothes or pants on a flat and heat resistant surface.
 - 2) Direct the steam nozzle plate closely on the garment and move back and forth motion.
 - 3) Repeat this motion until the wrinkles is smoothed out.
- Note: Slightly press and pull the garment against the direction of the steam ironing motion to make the steaming effectively.



4. MAINTENANCE & CARE

- 1) Make sure the plug is removed from the power supply socket.
- 2) After the unit is completely cooled down, clean it with the mild cleaner or gel-like cleaner by using soft cloth.
- 3) Do not immerse the main body in water to clean.
- 4) Open the water tank rubber plug to pour out the water.
- 5) Put the unit on the cool place right after the cleaning.

5. WARRANTY

This product is guaranteed for 1 year (commercial use for 3 months) from the date of receipt against manufacturing defect. The warranty does not cover the cover, brush, measuring cup and other accessories, damage or defect caused by negligence or use not according to this instruction manual.

*****Extra 3 months warranty: just complete Online Warranty Registration within 10 days from the date of receipt, free warranty will be extended to 15 months (not applicable to commercial use). Please enter our website: www.origo.hk**

Remark: For any repair service, please contact and bring with the invoice or receipt to the Service Centre.

Service Centre

ORIGIN MARKETING LIMITED
Unit H, 21/F, Reason Group Tower
(nearby 12 Wah Sing Street), 403 Castle Peak Road,
Kwai Chung, N.T., Hong Kong.
Tel: 2156 8238

Office Hours

10:30am - 12:30pm (Mon ~ Fri)
02:30pm - 05:30pm (Mon ~ Fri)
10:30am - 12:30pm (Sat)
(Closed on Sunday and Holiday)

www.origo.hk

Find us on



Origin Map

