

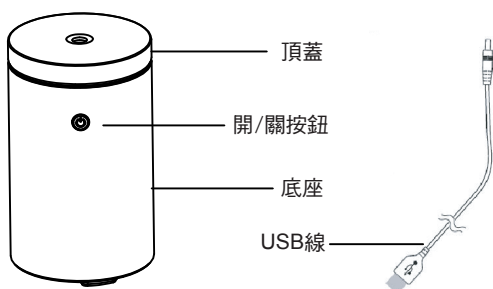


迷你香薰加湿器

為了使您能更瞭解本產品的性能和使用時的安全，請使用前務必詳細閱讀以下說明。

一、型號及規格

型號	: AD-35
電壓	: DC5V, 1A
功率	: 5瓦特
容量	: 45毫升
運作時間	: 約6小時連續放濕(沒水自動關機)
配件	: USB線(電源適配器不包括在內)



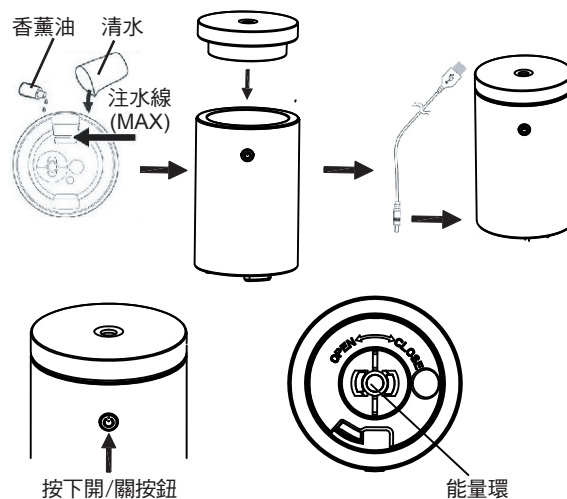
二、注意事項

- 1) 使用本產品前，請詳細閱讀本說明書。
- 2) 產品只供室內使用。
- 3) 產品不是玩具，應避免孩童單獨使用本產品。
- 4) 產品並不適合用於商業用途。
- 5) 當更換香薰油時必須清潔水槽。
- 6) 清洗加湿器時用清水清洗水槽並用乾淨的抹布擦乾。
- 7) 請勿使用清潔劑或研磨劑清潔機體內部。
- 8) 清潔前請先關閉電源並拔掉電源插頭。
- 9) 如包裝盒內有適配器，請使用製造商提供的原始適配器。
- 10) 如果長時間不使用本機，請拔下電源並將水倒出。
- 11) 切勿使用熱水或冰水。切勿使用腐蝕性溶劑清潔產品。
- 12) 切勿觸摸水位感應器並避免產品碰到其他物體。
- 13) 本機工作時切勿將手放在陶瓷盤上，否則可能會導致疼痛並損壞機器。
- 14) 切勿用布或紙等包裹適配器，否則，它不能正常散熱，並可能導致變形並會出現短路。
- 15) 請勿用濕手觸摸適配器。
- 16) 除了基本或帶有香味的水溶性香薰油外，請勿使用其他液體。
- 17) 不要將加湿器貼近牆壁、電器及家具表面使用，多餘的水分可能會對這些物品造成傷害。
- 18) 不可擅自拆卸、修理、改造本產品，如有任何問題請先致電客戶服務中心。
- 19) 切勿放置在鬆散的衣物上，以免阻塞空氣流動，而令到本機沒有霧氣或不能散熱。
- 20) 不要在本機運行時加水。
- 21) 請勿使用過濾水或蒸餾水。
- 22) 在本機注滿水時，請勿移動。

- 23) 請把本產品遠離兒童和寵物。請勿在木製或油漆表面上使用本產品，因為這些表面會被精油損壞。本機工作時請保持本機直立。請勿傾斜本機，因為水可能會濺出並損壞家具和布料。
- 24) 本機不是為體質、感覺或智力有障礙人士(包括小孩)或缺乏經驗及知識者使用，除非他們曾經接受負責安全人士的監督或指示。大人應指導小孩不可把玩電器。

三、使用方法

- 1) 將加湿器放在水平的平面上。將清水注入水槽內並不可超過最高注水線(MAX)。請將本機遠離牆壁和熱源，如發熱的爐具，散熱器等。
- 2) 如有需要，最多加5滴水溶性香薰油。



- 3) 將頂蓋放在底座上。
- 4) 將USB線插入加湿器的底座，然後將USB線插入電源。
提示：USB線電源輸出要求：DC5V-1A或更低。與大多數USB充電器兼容。(本產品不包含USB充電器)
- 5) 按下開/關按鈕，加湿器開始釋放霧氣及啟動夜燈功能。
- 6) 按下開/關按鈕兩次，加湿器定色，並繼續釋放霧氣。
- 7) 按下開/關按鈕三次，以關閉夜燈功能，並繼續釋放霧氣。
- 8) 連續按下開/關按鈕四次，關閉加湿器。
- 9) 能量環必須放置在正確位置，才能讓加湿器釋放霧氣。

四、清潔保養

- 1) 清潔前，您必須關閉電源，然後拔下插頭。
- 2) 在需要時可使用軟布和酒精進行清潔，以分解機體內部過多的油漬。
- 3) 可使用軟布或刷子清潔及用清水沖洗。
- 4) 從機體內部扭開並取出能量環，然後使用棉花棒和水或酒精清潔機體內的陶瓷盤。
- 5) 清潔後把能量環裝回機體內部。

五、常見問題

問題	原因	解決方法
沒有霧氣	使用不正確的水、蒸餾水或純淨水 加湿器水槽內缺水	使用自來水（不含過濾器） 添加額外的水
沒有霧氣或噴水	水太冷	更改為溫水
沒有霧氣或霧氣小	水槽需要清理。香薰油粘附在陶瓷盤或感應器上。 水位超過最高注水線(MAX)	按照清潔保養的說明建議清潔加湿器，並用刷子或棉花棒清潔機體內的陶瓷盤/感應器。 將水槽內的水清理然後將1/2的清水注入水槽內，並漸漸增加直至有霧氣釋放。
燈光不斷閃爍	水位指示器有污漬	建議清潔加湿器。請特別注意擦拭加湿器底部內的感應器/陶瓷盤。
加湿器在沒水的時候仍然繼續運作	水位指示器有污漬	建議清潔加湿器。請特別注意擦拭加湿器底部內的感應器/陶瓷盤。
底座漏水	加入過多水	不可超過最高注水線(MAX)

六、保用

本機可獲自購買日起1年免費保用(商業用途享有三個月免費保用)。此保用只包含生產所導致的品質問題；並不包括頂蓋、USB線及其他附件，因誤用或不依說明書指示使用而導致的損壞。

***額外3個月保用：凡於購買產品後10天內完成網上登記，即可免費延長保用期3個月，即15個月免費保用(商業用途除外)。請即登入網站：www.origo.hk

注意：保用時，須帶同收據及請先致電服務中心。

服務中心

源澤市務有限公司
香港新界葵涌青山公路403號
匯城集團大廈21樓H室(近華星街12號)
電話：2156 8238

辦公時間

上午10:30 - 下午12:30 (星期一至五)
下午02:30 - 下午05:30 (星期一至五)
上午10:30 - 下午12:30 (星期六)
(星期日及公眾假期休息)

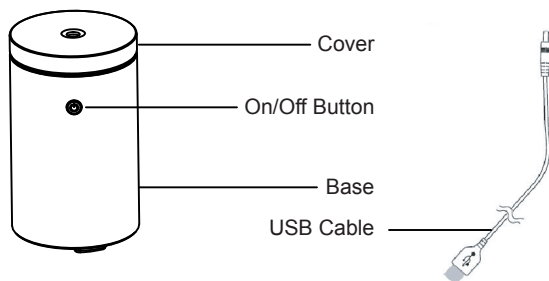


Aroma Diffuser Humidifier

Thank you for your purchase of our product. To use this product properly and safely, please read the following instruction carefully.

1. MODEL & SPECIFICATION

Model : AD-35
Voltage : DC 5V, 1A
Power : 5W
Capacity : 45ml
Run Time : Up to 6 hours(Auto shut off without water)
Accessory : USB cable (Power adaptor not included)



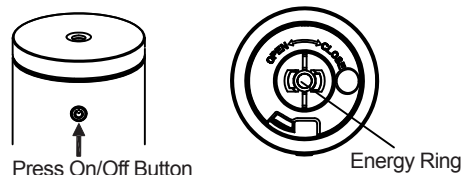
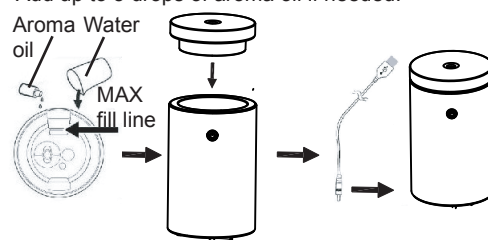
2. ATTENTIONS

- 1) Read all instructions and warnings carefully before use.
- 2) This product is for indoor use only.
- 3) This product is not a toy. Do not allow children to play it.
- 4) This product is designed for household use only.
- 5) Clean the unit when changing to a different oil.
- 6) Clean the unit by rinsing the water tank and wiping it dry with a clean cloth.
- 7) Do not use detergents or abrasive agents to clean the diffuser unit.
- 8) Shut off and unplug the power before cleaning.
- 9) Use the original adapter provided by the manufacturer if any.
- 10) If you don't use the device for a long time, unplug and pour water out.
- 11) Never use steamed water or very cold water. Never use corrosive solvent to clean product.
- 12) Never touch water level sensor and avoid product hitting other object.
- 13) Never put your hand above the ceramic disc when product is working, as this could cause pain and damage the machine.
- 14) Never wrap the adapter with a cloth or paper, etc. Otherwise, it cannot dissipate heat normally and may cause deformation and burn the membrane from a short circuit.
- 15) Never touch the adapter with wet hands.
- 16) Do not use liquids except for water & drops of essential or fragrance oils.
- 17) Do not aim the device at walls, home appliance, furniture surface as excess moisture could cause damage to them.
- 18) Do not take this unit apart exposing electrical parts. Call customer service for assistance and guarantee information.
- 19) Never place on loose fabric that can block air flow and prevent the unit from misting and ventilating properly.

- 20) Do not fill base under running water.
- 21) Do not use purified or distilled water.
- 22) Do not move once unit has been filled with water.
- 23) Keep away from children and pets. Do not use on wooden or painted surfaces that can be damaged by essential oil. Keep the unit upright at all times. Do not tilt unit at any time as water may spill and damage furnishings and fabrics.
- 24) Reminder: This appliance is not intended for use by persons (including children) with reduced physical, sensory or mental capabilities, or lack of experience and knowledge, unless they have been given supervision or instruction concerning use of the appliance by a person responsible for their safety. Children should be supervised to ensure that they do not play with the appliance.

3. DIRECTIONS FOR USE

- 1) Place the humidifier on a hard, flat and horizontal surface. Fill with regular tap water up to the MAX fill line.
- 2) Add up to 5 drops of aroma oil if needed.



- 3) Lower cover onto base.
- 4) Plug the USB cable into the base of the diffuser, then plug the USB cable into a source of power. Reminder: USB power source output requirement: 5V-1A or lower. Compatible with most USB wall chargers. (This product does not include a USB charger.)
- 5) Press the On/Off button once to begin misting with lights on.
- 6) Press the On/Off button twice to fixed light color and continue misting.
- 7) Press the On/Off button three times to turn the lights off and continue misting.
- 8) Press the On/Off button four times to turn the diffuser off.
- 9) The energy ring must be in place for the diffuser to mist.

4. MAINTENANCE & CARE

- 1) Before cleaning, you must turn the power off and unplug the unit.
- 2) Clean them by using soft cloth and rubbing alcohol when needed to break up excessive oil residue.
- 3) Clean them by using a brush and a soft cloth, and wash with clean water.
- 4) Remove energy ring then use a cotton swab and water or rubbing alcohol to clean the ceramic disc inside the base.
- 5) Replace energy ring after cleaning.

5. TROUBLE SHOOTING

Symptom	Cause	Solution
No Mist	Using incorrect water, distilled or purified	Use Tap Water (without filter)
	Unit is out of water	Add additional water
No misting and unit is spraying water	Water is too cold	Change to warm water
No Mist or Little Mist	Unit needs to be cleaned. Oils are clinging to ceramic disc or sensor	Clean unit as advised in instructions with clean water & clean ceramic disc/sensor with brush or swab
	Water level is higher than MAX fill line	Clean unit and add water 1/2 way to fill line and additional water after getting mist
Blinking Lights	Water level indicator is dirty	Clean unit as advised Pay particular attention to swab the sensor/disc inside the bottom of unit
Unit will not stop running even through empty	Water level indicator is dirty	Clean unit as advised Pay particular attention to swab the sensor/disc inside the bottom of unit
Water Leaks from base	Exceeded water was added	Don't fill water higher than MAX line

6. WARRANTY

This product is guaranteed for 1 year (commercial use for 3 months) from the date of receipt against manufacturing defect. The warranty does not cover the cover, USB cable and other accessories, damage or defect caused by negligence or use not according to this instruction manual.

*****Extra 3 months warranty: just complete Online Warranty Registration within 10 days from the date of receipt, free warranty will be extended to 15 months (not applicable to commercial use). Please enter our website: www.origo.hk**

Remark: For any repair service, please contact and bring with the invoice or receipt to the Service Centre.

Service Centre

ORIGIN MARKETING LIMITED
Unit H, 21/F, Reason Group Tower
(nearby 12 Wah Sing Street), 403 Castle Peak Road,
Kwai Chung, N.T., Hong Kong.
Tel: 2156 8238

Office Hours

10:30am - 12:30pm (Mon ~ Fri)
02:30pm - 05:30pm (Mon ~ Fri)
10:30am - 12:30pm (Sat)
(Closed on Sunday and Holiday)