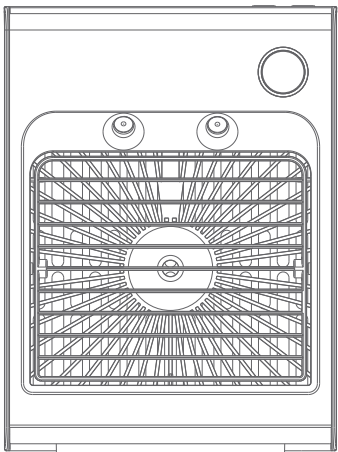




充電式噴霧搖擺風扇 說明書



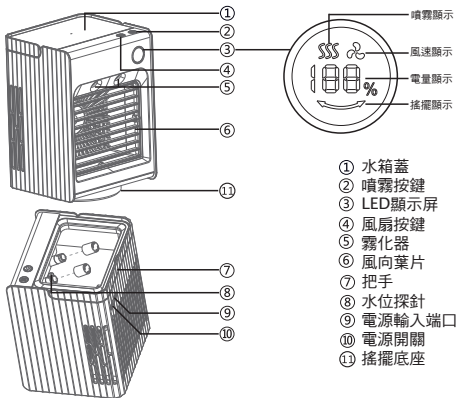
產品型號:ACS31MB /ACS31MW

*使用風扇前，請先細閱使用說明，
並請妥善保存以便將來翻閱。

型號及規格

1. 名稱：充電式噴霧搖擺風扇
2. 型號：ACS31MB/ACS31MW
3. 電池電壓：3.7V
4. 電池：4000mAh
5. 充電電壓電流：DC5.0V/1500mAh
6. 產品尺寸：約125x145x200mm
7. 產品重量：約830g
8. 配件：Type-C USB 充電線及製冰格

各部名稱



圖片只供參考，一切以實物為準

使用方法

1. 風扇功能：按風扇按鍵第1次，開啟風速1，按風扇按鍵第2次，開啟風速2，按風扇按鍵第3次，開啟風速3，按風扇按鍵第4次，關閉風扇。
2. 夜燈功能：連續按風扇按鍵兩次，開啟LED夜燈。關閉LED夜燈再次連續按風扇按鍵兩次。(LED燈可獨立使用。)
3. 搖擺功能：長按風扇按鍵，開啟風扇左右搖擺。關閉風扇左右搖擺，再次長按風扇按鍵。
4. 噴霧功能：按噴霧按鍵第1次，開啟噴霧，按噴霧按鍵第2次，轉換為間歇噴霧(噴3秒停2秒)，按噴霧按鍵第3次，關閉噴霧功能(此功能必須在風扇工作時才能開啟)。注意:出霧時需要一些時間，此乃正常現象。
5. 缺水保護：當水箱水位低於水箱內的水位探針時，噴霧停止。
6. 電源開關：電源開關推至“ON”位置時，接通電源，推至“OFF”位置”時，關閉電源。
7. 電源輸入端口：可使用USB 充電線給風扇充電。

顯示屏顯示

1. 風速顯示：風速1，LED顯示屏顯示1，同時風扇標誌慢速閃亮，風速2，LED顯示屏顯示2，同時風扇標誌中速閃亮，風速3，LED顯示屏顯示3，同時風扇標誌快速閃亮。
2. 噴霧顯示：持續噴霧時，噴霧標誌長亮，間歇噴霧時，噴霧標誌閃亮。
3. 搖擺顯示：開啟左右搖擺功能時，搖擺標誌左右箭頭長亮。
4. 電量顯示：產品充電和使用時，電量顯示0-100%之間跳動，充滿電顯示100%。
5. 低電量顯示：當電量低於10%時，電量顯示會閃爍直至關機。
6. 缺水顯示：當水箱水位低於水箱內水位探針時，顯示屏噴霧標誌會變為紅色，噴霧停止。

充電及使用時間

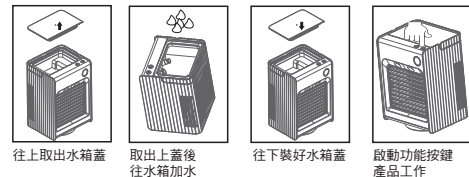
1. 充電時間:約4.5小時左右。
2. 使用時間:約2小時左右(根據不同風速)。
3. 購買本產品請充電4.5小時以上再使用。
4. 如本產品長期不使用時，建議每三個月充電一次，避免電池損壞導致產品不能使用。
5. 產品長期不使用時，請在常溫低濕度的環境下儲存，以免不良的環境導致產品功能損壞。

注意事項

1. 本產品使用前請先加水，在缺水的情況下禁止使用加濕功能。
2. 本產品不可以添加任何精油或者香水，以避免油質堵塞霧化片功能。
3. 本產品霧化設有缺水保護當加濕器缺水時產品將停止噴霧，如需繼續使用請往水箱內加水至最高水位線，再按噴霧按鍵啟動。
4. 清潔時請不要用水龍頭直接沖洗避免產品短路，建議使用柔軟棉布擦拭。
5. 本機不是為體質、感覺或智力有障礙人士(包括小孩)或缺乏經驗及知識者使用，除非他們曾經接受負責安全人士的監督或指示。大人應指導小孩不可把玩電器。
6. 本產品不能讓6歲以下兒童單獨使用。
7. 本產品在沒有正常使用1-2天後，使用前先清洗水箱再加水使用。
8. 若產品長期不使用時，請清理水箱內積水，保持乾爽，避免產生產生異味。

加水方法

使用步驟:



保用

本機可獲自購買日起1年免費保用(商業用途享有三個月免費保用)。此保用只包含生產所導致的品質問題；並不包括機身外殼、電池、USB線及其他 附件，因誤用或不依說明書指示使用而導致的損壞。

***額外3個月保用：凡於購買產品後10天內完成網上登記，即可免費延長保用期3個月，即15個月免費保用(商業用途除外)。請即登入網站：www.origo.hk

注意:保用時，須帶同收據及請先致電服務中心。

服務中心

源澤市務有限公司
香港新界葵涌青山公路403號
匯城集團大廈21樓H室(近華星街12號)
電話:2156 8238

辦公時間

上午10:30 - 下午12:30 (星期一至五)
下午02:30 - 下午05:30 (星期一至五)
上午10:30 - 下午12:30 (星期六)
(星期日及公眾假期休息)

www.origo.hk

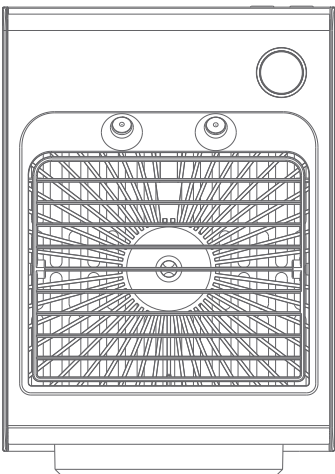


Find us on





Rechargeable Cool Mist Fan User Manual



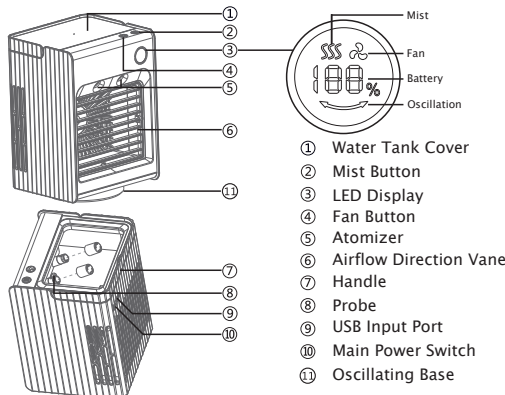
Model: ACS31MB/ACS31MW

Thank you for purchasing our products
Please read the instruction carefully before use
Please keep the instruction manual properly

MODEL & SPECIFICATION

1. Product Name : Rechargeable Cool Mist Fan
2. Product Model : ACS31MB/ACS31MW
3. Battery Voltage : 3.7V
4. Battery Capacity : 4000mAh
5. Input Voltage/Electric Current : DC5.0V/1500mAh
6. Product Size : Approx. 125x145x200mm
7. Product Weight : Approx. 830g
8. Accessories: Type-C USB cable and Ice Tray

Main Parts



The picture is for reference only, everything in kind shall prevail.

DIRECTIONS FOR USE

1. Fan Button: Turn the Fan on by pressing the Fan button, the fan starts at speed 1. Press the fan button to adjust the fan speed to the desired level (1-2-3-OFF).
2. Night light: Double press the Fan Button to turn on the LED light. Double press the Fan Button again to turn off the LED light. (LED light can be used independently.)
3. Oscillation: Press and hold the Fan button to allow the fan to LEFT/RIGHT oscillate the wind direction. To stop the oscillation, press and hold the Fan button again.
4. Mist: Press the Mist button to turn on continuous mist function, press the Mist button again to turn to two-port intermittent mist (spray for 3 seconds and stop for 2 seconds). To stop the mist function, Press the Mist button again (This function must be used with fan).
Note: After pressing the Mist button, it will take some time for the mist to spray out.
5. Water shortage protection: When the water level is lower than the probe in the water tank, mist function will stop automatically.
6. Power Switch : Toggle the switch to "ON" position to switch on the main power.
7. USB Input Port: For charging the fan

LED DISPLAY

1. Fan: Speed 1 - LED display "1" and fan icon flash at a low speed.
Speed 2 - LED display "2" and fan icon flash at a medium speed.
Speed 3 - LED display "3" and fan icon flash at a high speed.
2. Mist display: Continuously - LED display on.
Intermittently - LED display flash.
3. Oscillating: When the oscillating is turned on, LED display on.
4. Power: The battery level is displayed between 0-100%.
5. Low battery: When the battery level is lower than 10%, the battery display will flash until turned off.
6. Water shortage: When the water level is lower than the probe in the water tank, the LED display will change to red color.

Charging/Operation Time

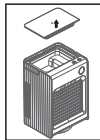
1. Charging Time: Approx. 4.5 Hours
2. Operation Time: Approx. 2 Hours (Depending on different speeds)
3. Please charge the product for more than 4.5 hours before use.
4. It is recommended to charge it every 3 months to avoid battery damage and affect product functions if the product is not working for a long time.
5. When the product is not working for a long time, please make sure it can store under low humidity or room temperature in case of environment factors to the product function damage.

ATTENTIONS

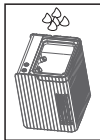
1. Please make sure the product is filling water before use. It is not allowed to use the mist function under waterless conditions.
2. It is not allowed to add any essential oils, perfume, or chemical and medical substances to avoid blocking the atomizer plate.
3. Please note that the product is set with a lack of water device protection that can stop spraying when waterless. Please make sure you are filling water to the highest water level line in the tank and press the spray button to work.
4. Do not immerse the product in water to clean.
5. This appliance is not intended for use by persons (including children) with reduced physical, sensory or mental capabilities, or lack of experience and knowledge, unless they have been given supervision or instruction concerning use of the appliance by a person responsible for their safety. Children should be supervised to ensure that they do not play with the appliance.
6. The product is not allowed to use individually by children under the age of 6.
7. When this product has not been used normally for 1-2 days, clean the water tank first and then add water before use.
8. It is not allowed to soak the cotton filter in water for a long time if the humidifier does not use, to avoid producing odors.

FILLING WATER

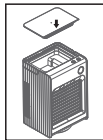
Operating Steps:



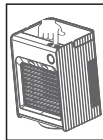
Remove the water tank cover down



Add water to the water tank



Install the water cover down



Turn on Spray button to work

Warranty

This product is guaranteed for 1 year (commercial use for 3 months) from the date of receipt against manufacturing defect. The warranty does not cover the cover, battery, USB cable and other accessories, damage or defect caused by negligence or use not according to this instruction manual.

*****Extra 3 months warranty: just complete Online Warranty Registration within 10 days from the date of receipt, free warranty will be extended to 15 months (not applicable to commercial use). Please enter our website: www.origo.hk**

Remark: For any repair service, please contact and bring with the invoice or receipt to the Service Centre.

Service Centre

ORIGIN MARKETING LIMITED
Unit H,21/F, Reason Group Tower
(nearby 12 Wah Sing Street), 403 Castle Peak Road,
Kwai Chung, N.T., Hong Kong.
Tel: 2156 8238

Office Hours

10:30am - 12:30pm (Mon ~ Fri)
02:30pm - 05:30pm (Mon ~ Fri)
10:30am - 12:30pm (Sat)
(Closed on Sunday and Holiday)