

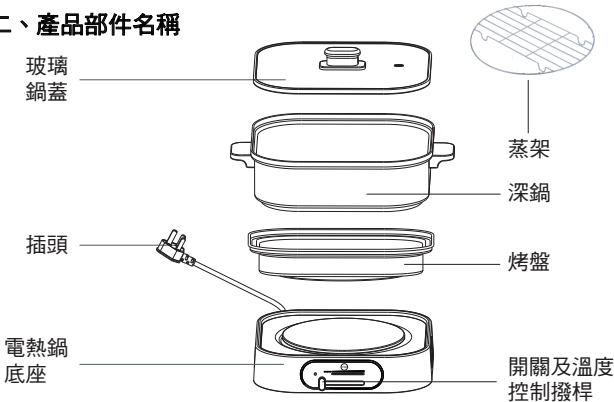
# origo 多功能電熱鍋

為了使您能更瞭解本產品的性能和使用時的安全，請使用前務必詳細閱讀以下說明。

## 一、型號及規格

型號 : MC101  
電壓 : 交流電 220-240伏特~, 50-60赫茲  
功率 : 1000瓦特  
深鍋容量 : 3.0升

## 二、產品部件名稱



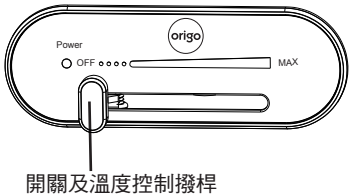
圖片只供參考，一切以實物為準

## 三、使用前的準備

- 1) 先拿出所有配件，以濕潤毛巾清潔。將電熱鍋底座放置於平坦位置上。
- 2) 使用前請確保已拆除所有包裝物料。
- 3) 請確定規格標貼上標示的額定電壓與當地供電電壓相同。如有疑問可向服務中心查詢。
- 4) 選擇靠近電源插座的位置，不要放在有水的地方使用。
- 5) 將烤盤或深鍋放在電熱鍋底座上。

注意: 每次只能使用一個烤盤或深鍋，烤盤及深鍋不能疊在一起使用。

- 6) 將插頭插入交流電220-240伏特，50-60赫茲的獨立插座，電熱鍋已可使用。



開關及溫度控制撥桿



烤盤及深鍋不能疊在一起使用

## 四、使用方法

- 1) 烹飪時，將食物直接置與烤盤或深鍋內。
- 2) 將開關及溫度控制撥桿從"OFF"調到"MAX"，此時加熱指示燈亮起。
- 3) 使用深鍋時須待預熱後才可以開始放入食物，深鍋適用於煎、炒、烤、蒸、煮、火鍋等。
- 4) 使用烤盤時須待預熱後才可以開始放入食物，根據不同食物或不同口味，調節不同火力。  
在加熱過程中，加熱指示燈會時亮時滅，此乃正常現象。  
注意: 烹飪食物時，只能使用木質或硅膠鑊鏟翻炒，不可使用金屬鑊鏟或器具，會刮傷塗層。
- 5) 使用完畢後，請將撥桿撥回至"OFF"及切斷電源。
- 6) 待電熱鍋完全冷卻後方可清潔或移動機身。

## 五、安全注意事項

- 1) 正確使用電源
  - 1.1) 電源線損壞時，不應自行更換。應到指定維修中心維修。
  - 1.2) 電熱鍋連接用插座不應使用延長線與標稱小於13A的插座，必須使用原裝之電線。
  - 1.3) 防止電插座負荷過重或損害保險線，高耗電量之電器不能同時接駁到同一電插座或同一線路。
  - 1.4) 電源線切勿靠近火源、高溫或隱藏在地毯之下，亦不可靠近水源。
  - 1.5) 請勿自行修理或更換已損壞之保險線。請帶同該電器前往核准之維修中心更換保險線。
- 2) 正確使用產品
  - 2.1) 切勿於水源或易燃物品附近使用。
  - 2.2) 切勿於高溫表面上或附近使用本產品。
  - 2.3) 使用時確保本品放置於安全、平穩的表面上。
  - 2.4) 請使用交流電220-240伏特，50-60赫茲的電源。
  - 2.5) 當電熱鍋運作時，切勿觸摸發熱線。
  - 2.6) 在本產品冷卻前，切勿接觸其發熱表面。
  - 2.7) 當本產品於兒童、老人或殘疾者附近使用，必須加倍留神，切勿讓兒童、老人或殘疾者於沒人監察下使用本產品。

## 六、清潔保養

- 1) 清潔前應確保電熱鍋處於冷卻狀態。
- 2) 清潔時，應用濕軟的布團擦拭電熱鍋的表面。如有難以擦拭的污垢，可使用日用的洗潔精進行擦拭，但不宜使用鋼絲球類狀物進行磨擦。
- 3) 請不要將插頭、電熱鍋底座浸入到液體中進行清潔。鍋蓋、深鍋、蒸架及烤盤可以直接進行清洗，方便衛生。
- 4) 清潔後放置於乾爽陰涼的地方。

## 七、小貼士

- 1) 電熱鍋使用時，必須放上食物，不可進行乾燒。此舉將嚴重縮短產品使用壽命。
- 2) 首次使用時，會有短暫時間的煙霧冒出，並有輕微異味。此種現象屬正常，請不用擔心。
- 3) 電熱鍋使用時間較長後，表面顏色有所變化，這是正常現象。

## 注意:

- 1) 本機不是為體質、感覺或智力有障礙人士(包括小孩)或缺乏經驗及知識者使用，除非他們曾經接受負責安全人士的監督或指示。大人應指導小孩不可把玩電器。
- 2) 本機不能用於附加外置的時計或控制器。

## 八、保用

本機可獲自購買日起1年免費保用(商業用途享有三個月免費保用)。此保用只包含生產所導致的品質問題；並不包括及玻璃鍋蓋、深鍋、蒸架、烤盤及其他附件，因誤用或不依說明書指示使用而導致的損壞。

\*\*\*額外3個月保用:凡於購買產品後10天內完成網上登記，即可免費延長保用期3個月，即15個月免費保用(商業用途除外)。

請即登入網站: [www.origo.hk](http://www.origo.hk)

注意: 保用時，須帶同收據及請先致電服務中心。

## 服務中心

源澤市務有限公司  
香港新界葵青青山公路403號  
匯城集團大廈21樓H室(近華星街12號)  
電話: 2156 8238

## 辦公時間

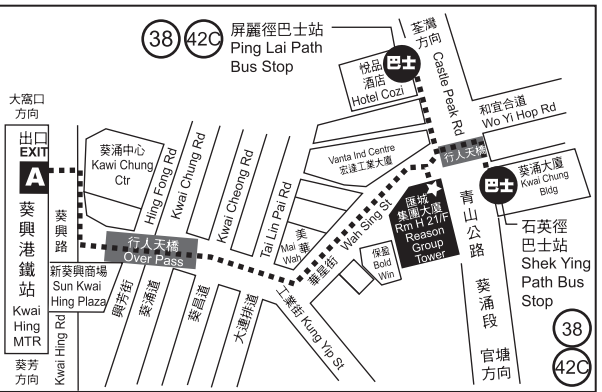
上午10:30 - 下午12:30 (星期一至五)  
下午02:30 - 下午05:30 (星期一至五)  
上午10:30 - 下午12:30 (星期六)  
(星期日及公眾假期休息)

[www.origo.hk](http://www.origo.hk)

Find us on



## 源澤地圖





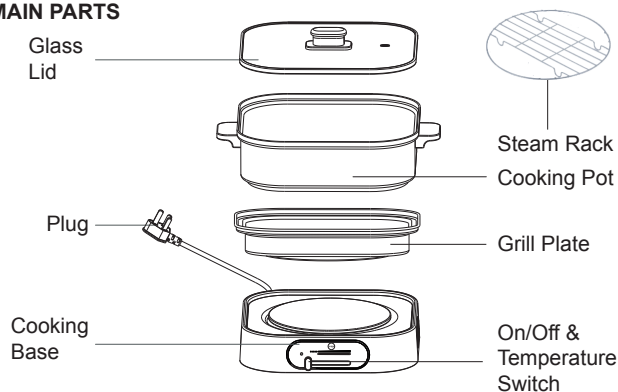
# Multi Function Cooker

Thank you for your purchase of our Multi Function Cooker. To use this Cooker properly and safely, please read following instruction carefully.

## 1. MODEL & SPECIFICATION

Model : MC101  
Voltage : 220-240V~50-60Hz  
Power : 1000W  
Cooking Pot Capacity : 3.0L

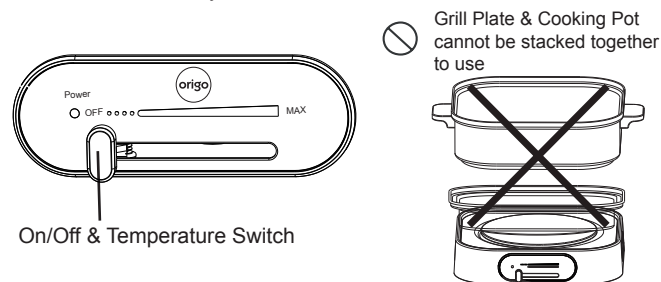
## 2. MAIN PARTS



The picture is for reference only, everything in kind shall prevail.

## 3. PREPARATION BEFORE USE

- 1) Take apart the grill plate, pot and glass lid, clean with a soft damp cloth. Place your cooking base on the level and stable surface.
- 2) Make sure that all packing materials are removed before use.
- 3) Before using the product, check if the voltage marked on the rating label corresponds to the mains at your home.
- 4) Choose the near part of socket during use. Do not use it near any sources with water.
- 5) Place the grill plate or cooking pot on the cooking base.  
Notice: Only grill plate or cooking pot can be used at a time, and the grill plate and cooking pot cannot be stacked together to use.
- 6) Plug the power plug into an 220-240V~, 50-60Hz electrical outlet, the Cooker is ready for use.



## 4. OPERATIONS

- 1) When cooking, put the food directly in the grill plate or cooking pot.
- 2) Push the On/Off & Temperature Switch from "OFF" to "MAX", and the heating indicator will light up.
- 3) When using a cooking pot, it must be preheated before you can start adding food. The cooking pot is suitable for grill / stir-fry / roast / steam / slow cooking / hot pot function, etc.
- 4) When using a grill plate, it must be preheated before you can start adding food. According to the different heat of cooking request, adjust the switch to adjust different power. During heating process, the indicator light will be on or off automatically.  
Notice: Only use wooden or silicone Spatula to flip or stir the food. DO NOT USE METAL SPATULA OR SHARP APPLIANCE.
- 5) When finished using the Cooker, push the switch to "OFF" position.
- 6) Wait until the appliance is completely cool down before moving or cleaning.

## 5. IMPORTANT SAFEGUARDS

- 1) CORRECT USE OF ELECTRICITY
  - 1.1) To prevent the risk of electric shock, DO NOT USE the Cooker with broken power supply wires or broken plug. All repair works must be made by a professional (authorized distributor). NEVER TRY TO REPAIR the cable or plug by yourself. Please take the damaged Cooker to your local authorized maintenance center.
  - 1.2) Use of an extension cord is not recommended as it may overheat and cause risk of fire. Must use the original power cord.
  - 1.3) To prevent overloading and blowing fuses, ensure that no other high power appliance is plugged into the same socket, or another socket which is connected in the same circuit.
  - 1.4) DO NOT PUT the cord under the carpet, blankets. Always keep the power cable away from the walk way in room.
  - 1.5) DO NOT TRY TO REPAIR the broken fuse by yourself, the user should take the set to your local authorized maintenance center to repair.
- 2) SAFETY IN OPERATIONS
  - 2.1) DO NOT OPERATE this Cooker near water sources or flammable liquids.
  - 2.2) DO NOT OPERATE this Cooker on or near any hot surface. (Hot plate, electric stoves etc).
  - 2.3) Ensure the Cooker is placed on a stable, secure surface to eliminate the possibility of tipping over.
  - 2.4) Always operate this Cooker from an earthed domestic 220-240V~, 50-60Hz power socket.
  - 2.5) Do not touch the heating element when the Cooker is operating.
  - 2.6) Never try to touch the hot surface of this Cooker before it is cool down.
  - 2.7) Extreme caution is necessary when this appliance is used by or near children or invalids and whenever this appliance is left operating unattended.
  - 2.8) This appliance is intended to be used in household and similar applications such as: staff kitchen areas in shops, office and other working environments; farm houses; by clients in hotels; motels and other residential type environments; bed and breakfast type environments.

## 6. MAINTENANCE & CARE

- 1) Make sure the plug is removed from the power supply socket. After the Cooker is completely cooled down, clean it with the mild cleaner or gel-like cleaner by using soft cloth.
- 2) PLEASE DO NOT CLEAN THE COOKER WHEN IT IS STILL HOT. DO NOT USE hard brushes, scratchy materials and/or alcohol, petrol or any organic cleaner for the cleaning purpose.
- 3) Do not immerse the plug and cooking base in water to clean.
- 4) Put the Cooker on the cool place right after the cleaning.

## 7. OPERATION TIPS

- 1) Do not allow to turn on this Cooker if you have not place any food on it.
- 2) For first time operation, there will have some smoke or smell. This situation happens properly. Don't worry about that.
- 3) If this Cooker is using very long time, the surface of Cooker will become fade, this situation also happens properly.

## Attentions:

- 1) This appliance is not intended for use by persons (including children) with reduced physical, sensory or mental capabilities, or lack of experience and knowledge, unless they have been given supervision or instruction concerning use of the appliance by a person responsible or their safety. Children should be supervised to ensure that they do not play with the appliance.
- 2) Appliances are not intended to be operated by means of an external timer or separate remote-control system.

## 8. WARRANTY

This product is guaranteed for 1 year (commercial use for 3 months) from the date of receipt against manufacturing defect. The warranty does not cover the glass lid, cooking pot, grill plate, steam rack and other accessories damage or defect caused by negligence or use not according to this instruction manual.

*\*\*\*Extra 3 months warranty: just complete Online Warranty Registration within 10 days from the date of receipt, free warranty will be extended to 15 months (not applicable to commercial use). Please enter our website: [www.origo.hk](http://www.origo.hk)*

Remark: For any repair service, please contact and bring with the invoice or receipt to the Service Centre.

## Service Centre

ORIGIN MARKETING LIMITED  
Unit H,21/F, Reason Group Tower  
(nearby 12 Wah Sing Street), 403 Castle Peak Road,  
Kwai Chung, N.T., Hong Kong

## Office Hours

10:30am - 12:30pm (Mon ~ Fri)  
02:30am - 05:30pm (Mon ~ Fri)  
10:30am - 12:30pm (Sat)  
(Closed on Sunday and Holiday)

## Origin Map

Please refer to Chinese Manual.

[www.origo.hk](http://www.origo.hk)



Find us on

