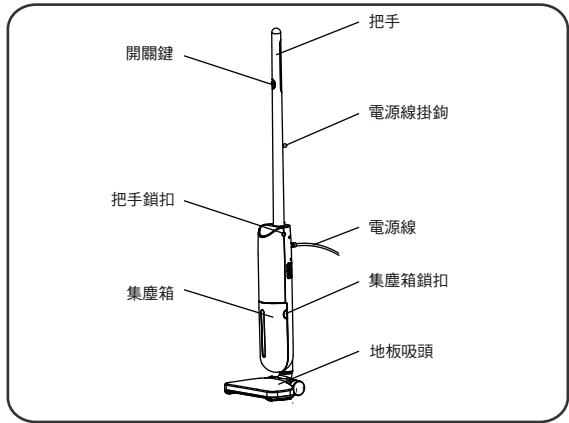


纖幼旋風式吸塵機

型號：VC-10
電壓：220 - 240V~, 50/60Hz
功率：400W MAX,



注意安全事項

1. 使用本產品前，請先細閱使用此說明書，並請妥善保存，以便日後翻閱。
2. 使用本產品前，請確定規格標貼上所示的額定電壓與當地供電電壓相同。如有疑問可向服務中心查詢。
3. 本產品只可以用附設的電源線使用。
4. 打開包裝，檢查產品。如發現產品有損壞，請勿使用及即時聯絡服務中心。
5. 為防止損害電源線，請勿把電源線掛放在檯邊上或接觸發熱的物體。
6. 使用時，切勿把本產品放置於火爐或發熱的物體附近。
7. 請勿把本產品浸在水或任何液體中，以免引起火災或漏電，導致受傷。
8. 請勿在本產品上自行加上產品不包括之組件，以免發生意外。
9. 本產品不可在室外或有水漬的地面上使用。
10. 清洗或不使用本產品時，請先拔除電源線。
11. 請勿將別針等金屬利器或其他異物放入進風口、出風口，否則會損壞產品。
12. 請勿使用本產品吸入燃燒物體（例如：香煙）。
13. 請勿使用電源線來拉動或提起本產品。
14. 如本產品的電源線有損壞痕跡，為保障安全，請立即停止使用並聯絡供應商或代理商或合資格人員作更換。
15. 請勿用濕手觸摸產品及其插頭。
16. 使用時，請保持頭髮，鬆身衣物，手或身體其他部份吸口，以免被吸著纏住。
17. 打掃梯級時需格外小心。

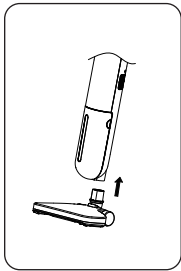
18. 在未裝好集塵箱前，請勿使用本產品。
19. 除本說明書內標明，本產品不可作其他用途。

提示

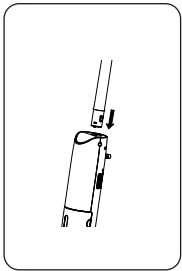
本機不是為體質、感覺或智力有障礙人士(包括小孩)或缺乏經驗及知識者使用，除非他們曾經接受負責安全人士的監督或指示。大人應指導小孩不可把玩電器。

使用方法

1. 打開包裝，取出主機及配件；
2. 把配件安裝在主機上；
3. 推開 / 關鍵，吸塵器開始工作



將地板吸頭插入主機體直至“



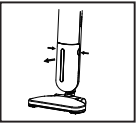
將把手入主機體直至

⇒ 按開/關鍵，進入吸塵狀態

注意

- 確保擺放位置正確，盡量避免陽光直射，不要靠近火爐或其他發熱器等，還要避免電器元件受潮；
- 嚴禁吸入未熄滅的煙蒂，以免燒壞過濾器組件進而損壞電機。

清理集塵箱



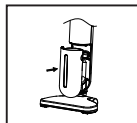
1. 按集塵箱鎖扣，打開集塵箱；



2. 取出過濾器，清理過濾器的垃圾；



3. 清理集塵箱內的垃圾；



4. 清理垃圾後，重新安裝過濾器，如發現過濾器非常髒，請及時沖洗和擦拭。

注意

- 要經常清潔過濾器組件，以防吸力下降，引起電機過熱，影響吸塵器使用壽命。

保用

本機可獲自領取日起1年免費保用(商業用途享有三個月免費保用)。此保用只包含生產所導致的品質問題；並不包含外殼或其配件，及因誤用或不依說明書指示使用而導致的損壞。

***額外3個月保用: 凡於購買產品後10天內完成網上登記，即可免費延長保用期3個月，即15個月免費保用(商業用途除外)。請即登入網站：www.origo.hk

注意：保用時，須帶同收據及請先致電服務中心。

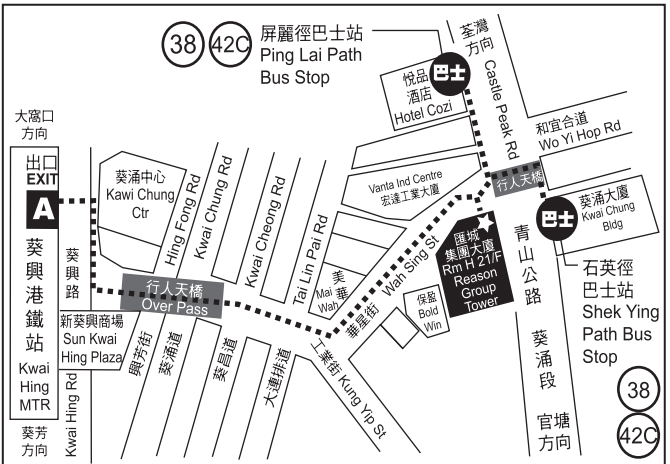
服務中心

源澤市務有限公司
香港新界葵涌青山公路403號
匯城集團大廈21樓H室（近華星街12號）
電話: 2156 8238

辦公時間

上午10:30 - 下午12:30 (星期一至五)
下午02:30 - 下午05:30 (星期一至五)
上午10:30 - 下午12:30 (星期六)
(星期日及公眾假期休息)

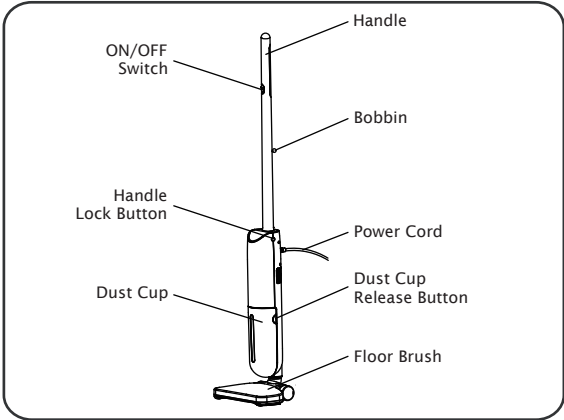
源澤地圖



Slim Cyclonic Vacuum Cleaner

origo

Model number : VC-10
Voltage : 220 - 240V~, 50/60Hz
Power input : 400W MAX



IMPORTANT SAFETY INFORMATION

1. Read all instructions carefully before using the appliance. Appropriately keep it for future reference when necessary.
2. Before using the appliance, check if the voltage marked on the rating label corresponds to the mains in your home.
3. This appliance can only use with the attached power cord.
4. Open the package and ensure that the appliance is undamaged. In case of doubt, do not use and contact your service centre.
5. Do not hang the power cord on the edge of table or touch the surface with high temperature in order to avoid damage to the power cord.
6. This product cannot be used beside the stove and other high temperature objects.
7. Do not dip the product into water or other liquid as to avoid accident.
8. Do not use parts that are not provided by recommended manufacturer as to avoid happen accident.
9. Do not use the appliance outdoor or wet surfaces.
10. To avoid danger of electric shock, unplug from outlet when not in use and before cleaning.
11. Do not use the appliance to vacuum glass and aculeated metal, otherwise it might be damaged.
12. Do not pick up anything that is burning or smoking (such as cigarettes).
13. Do not pull or carry the vacuum cleaner by the power cord.
14. If the power cord is damaged, it must be replaced and repaired by service centre.
15. Do not handle plug or appliance with wet hand.
16. Keep hair, loose clothing, fingers and all parts of body away from openings and moving parts.
17. Extra care when using appliance on stairs.

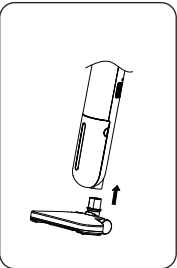
18. Do not use the vacuum cleaner without dust cup filter in place.
19. Do not use for any purpose other than described in this instruction manual.

REMINDER

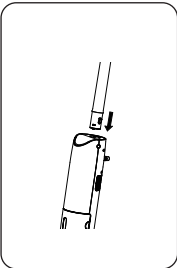
This appliance is not intended for use by persons (including children) with reduced physical, sensory or mental capabilities, or lack of experience and knowledge, unless they have been given supervision or instruction concerning use of the appliance by a person responsible for their safety. Children should be supervised to ensure that they do not play with the appliance.

USAGE

1. Take out the relative accessories;
2. Insert the relative accessory into the main machine;
3. Turn on the product, start working.



Insert the brush as the fig. after hearing "kata" voice.



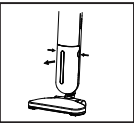
Insert the handle as the fig. after hearing "kata" voice.

Turn on the ON/OFF switch and start working

NOTICE

- Please make sure the product is properly placed. Don't put it under sunlight or near stove;
- Stumps with fire is forbidden;

CLEAN THE DUST CUP



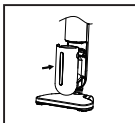
1. Push the release button to take out the dust cup.



2. Open the filter frame and clean the dirt;



3. Clean the dirt inside the dust cup;



4. Install the filter flame and dust cup after cleaning. Wash the filter flame if it's dirty.

NOTICE

- The filter flame should be clean often.

WARRANTY

This product is guaranteed for 1 year (commercial use for 3 months) from the date of receipt against manufacturing defect. The warranty does not cover the housing and its accessories, damage or defect caused by negligence or use not according to this instruction manual.

***Extra 3 months warranty: just complete Online Warranty Registration within 10 days from the date of receipt, free warranty will be extended to 15 months (not applicable to commercial use). Please enter our website: www.origin.hk

Remark: For any repair service, please contact and bring with the invoice or receipt to the Service Centre.

SERVICE CENTRE

ORIGIN MARKETING LIMITED
Unit H, 21/F., Reason Group Tower, (nearby 12 Wah Sing Street)
403 Castle Peak Road, Kwai Chung, N.T., Hong Kong.

OFFICE HOURS

10:30am - 12:30pm (Mon ~ Fri)
02:30pm - 05:30pm (Mon ~ Fri)
10:30am - 12:30pm (Sat)
(Closed on Sunday and Holiday)

ORIGIN MAP

