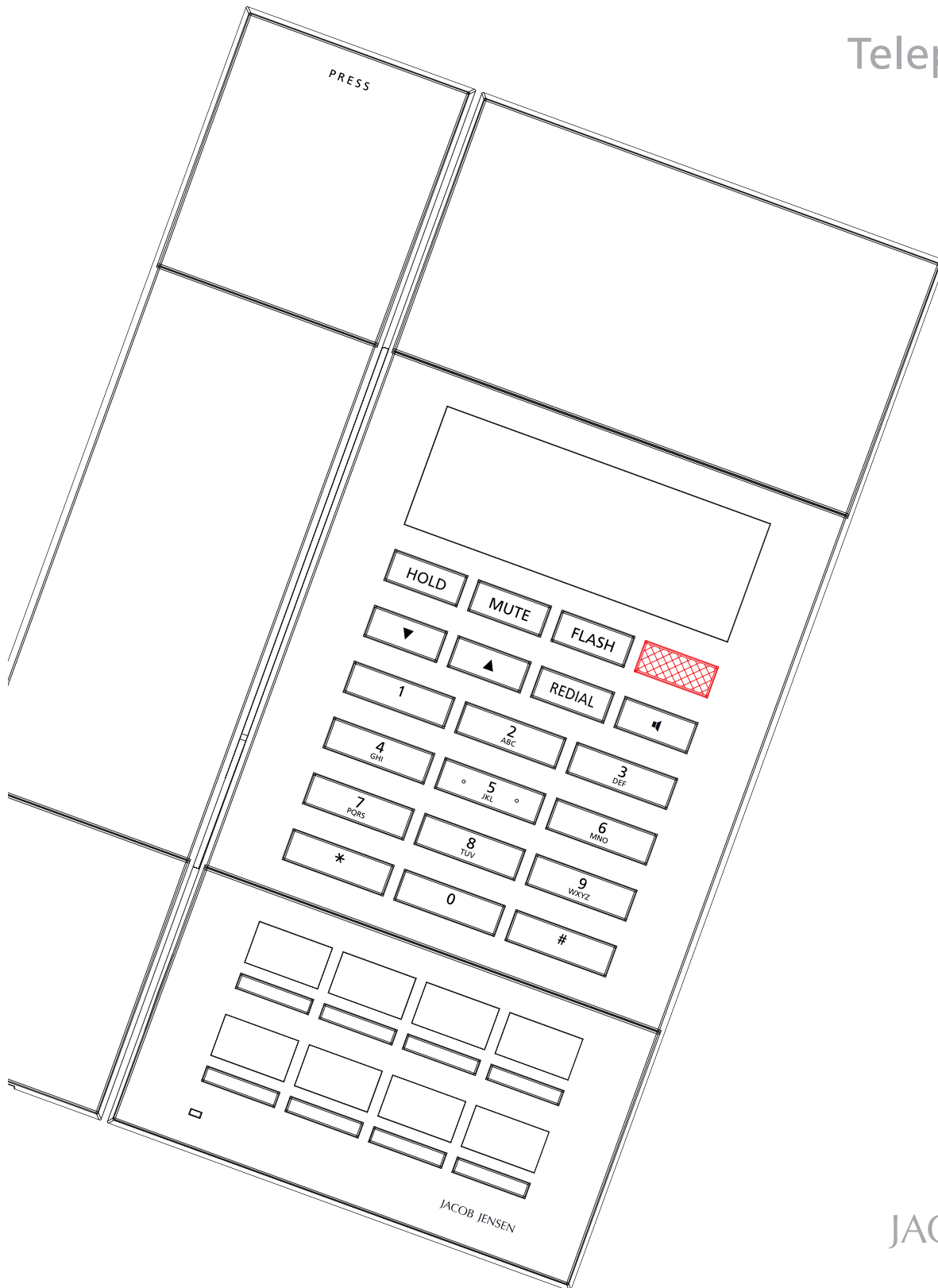


Telephone IP60

User Manual

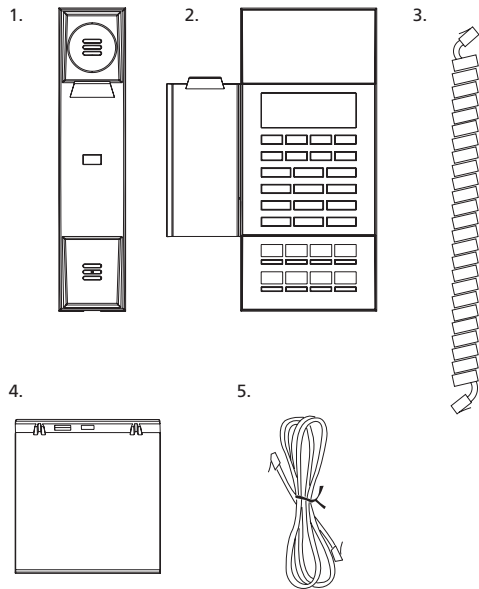


JACOB JENSEN™

CONTENTS

The following items are included in the package of JACOB JENSEN™ Telephone IP60:

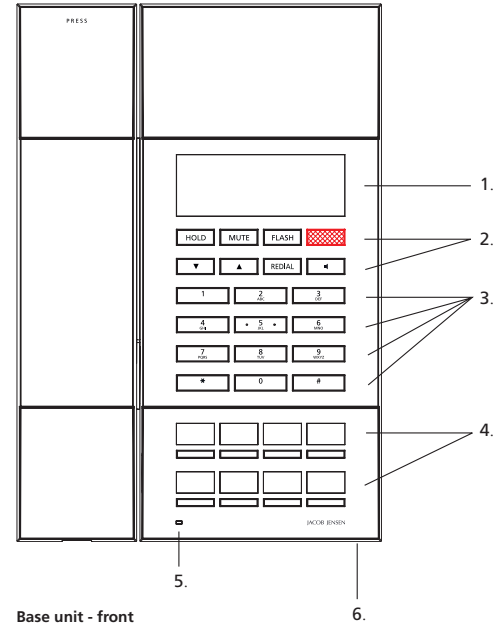
1. Telephone handset
2. Base station
3. Handset coiled cord
4. Table stand
5. Line cord



MAIN FEATURE LIST

- Corded Handset VOIP and SIP compatible.
- Mute, Flash, Speaker, Hold, Redial.
- Redial deleted after ten minutes.
- Adjustable earpiece / speaker volume / ringer volume.
- Speakerphone.
- Easy web configuration.
- Desk or wall mountable.
- Supports message waiting lamp key with retrieval function.
- 8 Service buttons with icon.
- Supports obtaining IP address via DHCP/Static IP.
- Supports PCMU, G.723.1, G.729a/b, PCMA speech decoding algorithms.
- Supports RFC2833, SIP INFO, and other DTMF transmission mode.
- Supports IEEE802.1 Q standard, IEEE802.3af protocol.
- Supports SIP protocol's standards.
- Supports upgrade through HTTP/TFTP protocol.
- Adopts dynamic speech detection; Comfortable noise generation; Speech buffering technologies.
- Integrated PoE power supply function for easy installation.

CONTROLS AND FUNCTIONAL KEYS

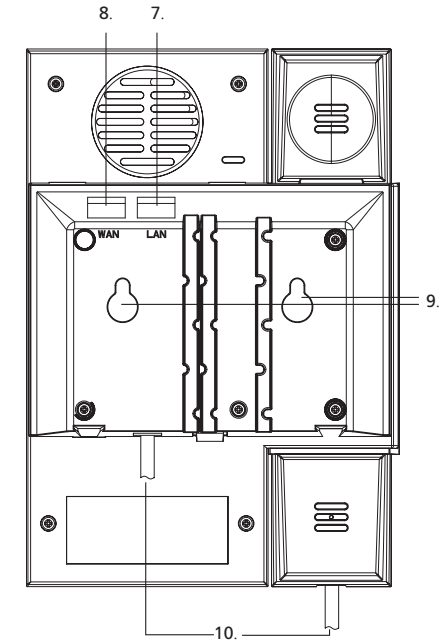


Base unit - front

1. Customer label area
2. 8 functional keys
3. 12 numerical keys
4. Service buttons
5. Indicator (LED) - for "Line in use (blue)" and "Mute (red)"
6. Hands-free microphone

Features Description of the functional keys

HOLD	- Places the call on hold
MUTE	- Microphone switch (handset)
FLASH	- Flash button
MWI	- MWI – Message Waiting Indicator
▲ ▼	- To lower or increase the speaker and handset volume
REDIAL	- Redial button
◀	- For on hook dialling (speaker phone mode)
* (X)	- Key for special services
#	- Key for special services



Base unit - rear

7. LAN port
8. WAN port
9. Holes for wall mounting
10. Handset cord jack

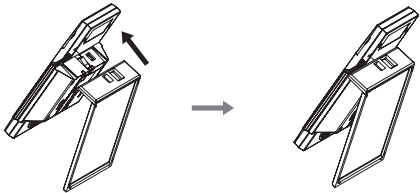
Congratulations on your new JACOB JENSEN™ Telephone IP60.

The telephone is designed in Denmark by Jacob Jensen, whose products have gained international recognition for their original, simple and classic design. Jacob Jensen has received about 100 prizes from around the world and has 19 products included in The Design Study Collection and The Design Collection of The Museum of Modern Art in New York.

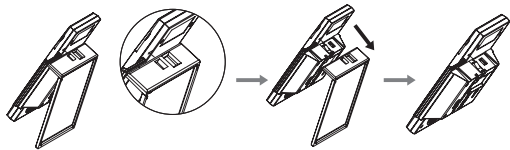
The IP60 has been designed specifically for hotel use. Voice over IP technology is employed for clear sound and reliable operation. SIP protocols ensure compatibility with all major brands.

A. INSTALLATION

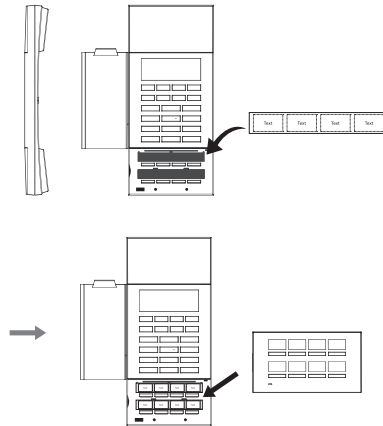
A.1. Base installation – table stand



Disassembly:



A.2. Faceplate installation



A.3. Install the handset cord

1. Insert one end of the attached handset cord to the jack on the handset, the other end to the jack of the base
2. Correctly install the battery
3. Connect the WAN port with the POE port of the PBX via internet cable
4. The default mode is DHCP. For more information, refer to telephone configuration setup description.

Note:

1. Please install the phone in dry and clean environment and avoid effected with damp.
2. The telephone should avoid fire, water spray, shock, clean the surface dust by soft cloth; chemical solvent is prohibited to use.

B. CONFIGURATION WITH WEB BROWSER

When the telephone and the PC are connected to the network, open the browser Internet Explorer and enter the IP address. (In on-hook mode, press **MUTE** to get the local IP address).

Type in username and password, then press ENTER to log on to the interface. On first use, leave password blank and press enter. The Administrator Password can be set under Network, System Settings.



Note:

1. Each time a parameter is changed, please click (OK) to save the setting.
2. The factory default network settings mode is DHCP. In this mode the phone requests an IP address and network parameters automatically. In the absence of a DHCP server, PPPoE or Static IP modes are available.
3. PC preparation work before telephone setup. After confirming the telephone IP, first make sure PC's network connection to telephone is okay, then set up the PC to guarantee the PC can visit telephone normally. For example, telephone IP is 192.168.1.171, then PC's IP needs to be set up as 192.168.1.***(*** can be any number between 0 to 255 except for 171).

C. WEB FUNCTIONAL DESCRIPTIONS

C.1 Network settings

Connection Type:	Choose the way of getting IP address, default setting is DHCP.
IP Address:	If the SIP supplier offers static IP address, input the static IP address.
Subnet Mask:	Input subnet Mask
Default Gateway:	Input default gateway address.
Primary DNS:	Input primary DNS services address.
Secondary DNS:	Input secondary DNS server.
Voice VLAN ID:	Enter the VLAN PBX's voice ID.
Data VLAN ID:	Enter the VLAN PBX's data ID.

C.2 SIP settings

SIP Proxy:	Configure the SIP server address.
SIP User ID:	Configure the SIP registration account.
SIP Authentication ID:	Configure the SIP registration certification.
SIP Authentication PIN:	Configure the SIP account password.
User Name:	Configure the SIP account user name.
Subscribe for MWI:	Configure phone voice mail indicator, if voice mail function is available, phone MSG indicator would shine.
Message Service Number:	Configure voice mail number extraction.
Use Hotline:	Configure whether hotline function is enabled.
Hotline Number:	Configure the hotline number.

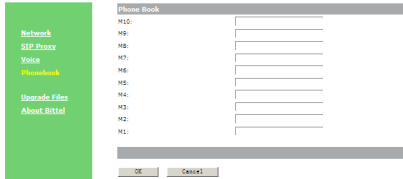
Note: Please choose YES for SIP Registration.

C.3 Voice configuration

Preferred Voice Codec:	Configuration mode of voice CODEC
Use # to dial immediately:	Configure whether # speed dial function enabled or not.
The time wait to dial out:	Configure the time for sending the dialled number.
The pause time (1-5s):	Configure PAUSE time.

Note: Please click the OK button when all the settings are finished, the phone will automatically store the settings and reboot.

C.4. Speed dial configuration



Phone book:	Set the speed dial phone number
--------------------	---------------------------------

C.5. Upgrade Mode

Upgrade Firmware:	Click 'Browse' to select the application that needs to be updated, click 'Start Upgrade' button to begin the Upgrade procedure. After successful upgrade, back to the initial login state.
--------------------------	--

D. HOW TO USE THE TELEPHONE

Placing a call

1. Pick up the handset or press **[M]**.

Dial Directly

1. Set "Use # to dial immediately" on web page "Voice-Dial Rules Settings" to "Yes" mode.
2. In On-hook mode, press the desired number and press **[#]** key to dial out .

Redial

1. In Off-hook mode, press the **[REDIAL]** key.

Note: Follow the steps below to set whether Redialled number disappears or not when the phone is on on-hook state:

To activate "Redialled number disappears":

Press **[HOLD] + [*] + [HOLD] + [REDIAL]**

To cancel "Redialled number disappears":

Press **[HOLD] + [#] + [HOLD] + [REDIAL]**

Speed dial

1. Programming the service buttons

Programming the service buttons manually: On-hook, press **[HOLD]** (HOLD light is on) + the storing number + guest service button/message waiting light.

Programming the service buttons by web: Please open the "Phonebook" on the web page, insert the storing number one by one, press OK.

2. Placing a call

When the phone is in off-hook status, press a service button to dial the stored number.

Hold

During a call, press **[HOLD]** on the base to put the current party on hold and send hold music to them. Indicator LED will light up. Press **[HOLD]** again, the current call will release call hold.

Mute Function

During a call, press **[MUTE]** to stop the transmission for handset and speaker.

Volume Adjustment

In off-hook mode press **[▲]** or **[▼]** to adjust the voice volume of the base.
In on-hook mode press **[▲]** or **[▼]** to adjust the ringer volume of the base.

Note: The phone can be programmed to restore the default level after hanging up.

Press **[HOLD] + [#] + [HOLD] + [▲] [▼]** returns to default level.

Press **[HOLD] + [*] + [HOLD] + [▲] [▼]** remains at same level.

Hot Line Function

Please choose the "Use Hotline" option on "SIP PROXY-Advanced SIP Settings" through WEB, input the Hotline Number, then click "OK". SIP phone would automatically dial the hot line number once SIP phone off-hook, cannot dial the other number, but can receive the incoming call normally.

Flash

With SIP phone off-hook, pressing **[FLASH]** means the phone is first on-hook then off-hook.

Message Waiting Indicator (MWI)

Message Waiting notifications in SIP are made with the notify method.

The MWI will flash if there is a message. Pick up the handset or press the speaker **[M]**, then press the MESSAGE button **[MESSAGE]** – The phone will dial out the preset message service number. The MESSAGE LED will turn off once the message has been collected.

Restore factory settings

With SIP phone activated by power and on-hook, press **[5] + [*] + [5] + [#]**, the phone will restore factory settings.

POE Power

This device's POE power is level 2 and 6.49W max.

E. INSTALLATION ATTENTION & MAINTENANCE

The phone has been manufactured using the very latest technology, and the highest quality components and workmanship, under ISO9001 quality control procedures. It can be relied on to provide many years of trouble-free service, especially if these simple tips are followed:

- Handle with care, avoiding hard knocks and shocks.
- Do not expose this product to dust, strong sunlight, humidity, high temperature, or mechanical shock.
- Do not use corrosive or abrasive cleansers on this product. Keep the unit dust free by wiping it with a soft, dry cloth.

- Do not tamper with or attempt to modify the phone, it would make it unsafe to use. Should any service difficulties or faults be encountered, the following list may help you identify and remedy problems. In many cases, however, it may be necessary to call the distributor from whom you purchased it.

F. TROUBLESHOOTING

1. No dialing tone

- Check the telephone network
- Check the connection of handset cord and straight line cord

2. No ringing or no continuous ring

- Check the telephone line
- Check the quantity of parallel phone set
- Check flash settings

3. Noise during talk

- Check the telephone line
- Check the handset cord

G. FCC APPROVAL

Complies with Part 68 of the FCC rules. On the bottom of this telephone is a label that contains, among other information, the FCC registration number and the ringer equivalence number (REN) for this telephone. If requested, you must provide this information to the Telephone Company.

H. EC DECLARATION OF CONFORMITY

(Telephone IP60, type JJ IP60) is in compliance with the essential requirements and other relevant provisions of Directive 2014/53/EU.



I. JACKS

Use RJ11C USOC standard modular jacks.

Product by: Bell Xpress A/S, Sletvej 50, 8310 Tranbjerg J, Denmark · www.bellxpress.dk

www.jacobjensen.com



Generation to generation...